

IMPORTANT
Read Before Using

IMPORTANT
Lire avant usage

IMPORTANTE
Leer antes de usar



Operating / Safety Instructions
Consignes d'utilisation/de sécurité
Instrucciones de funcionamiento y seguridad

HSSC-01



DREMEL®

P.O. Box 081126 Racine, WI 53408-1126

Call Toll Free for Consumer Information and Service Locations

Pour obtenir des informations et les adresses de nos centres de service après-vente, appelez ce numéro gratuit
Llame gratis para obtener información para el consumidor y ubicaciones de servicio

1-800-4-DREMEL (1-800-437-3635) www.dremel.com





For English Version
See page 2

Version française
Voir page 15


Versión en español
Ver la página 29

Safety Symbols

The definitions below describe the level of severity for each signal word. Please read the manual and pay attention to these symbols.

	This is the safety alert symbol. It is used to alert you to potential personal injury hazards. Obey all safety messages that follow this symbol to avoid possible injury or death.
	DANGER indicates a hazardous situation which, if not avoided, will result in death or serious injury.
	WARNING indicates a hazardous situation which, if not avoided, could result in death or serious injury.
	CAUTION indicates a hazardous situation which, if not avoided, could result in minor or moderate injury.

Important Safety Warnings

 **Read all safety warnings, instructions, illustrations and specifications provided with this power tool.** Failure to follow all instructions listed below may result in electric shock, fire and/or serious injury.

SAVE ALL WARNINGS AND INSTRUCTIONS FOR FUTURE REFERENCE

The terms tool, power tool, scissors, shears, product or appliance in this manual refers to the Dremel HSSC-01.

1. Work Area Safety

- a. **Keep work area clean and well lit.** Cluttered or dark areas invite accidents.
- b. **Do not operate power tools in explosive atmospheres, such as in the presence of flammable liquids, gases or dust.** Power tools create sparks which may ignite the dust or fumes.
- c. **Keep children and bystanders away while operating a power tool.** Distractions can cause you to lose control.

2. Electrical Safety

- a. **Power tool plugs must match the outlet. Never modify the plug in any way. Do not use any adapter plugs with earthed (grounded) power tools.** Unmodified plugs and matching outlets will reduce risk of electric shock.
- b. **Do not expose power tools to rain or wet conditions. Do not use outdoors.** Water entering a power tool will increase the risk of electric shock.

- c. **Do not place or store appliance where it can fall or be pulled into a tub or sink. Do not place in or drop into water or other liquid.**

3. Personal Safety

- a. **Stay alert, watch what you are doing and use common sense when operating a power tool. Do not use a power tool while you are tired or under the influence of drugs, alcohol or medication.** A moment of inattention while operating power tools may result in serious personal injury.
- b. **Use personal protective equipment. Always wear eye protection.** Protective equipment such as dust mask, non-skid safety shoes, hard hat, or hearing protection used for appropriate conditions will reduce personal injuries.
- c. **Prevent unintentional starting. Ensure the switch is in the off-position before connecting to power source and / or battery pack, picking up or carrying the tool.** Carrying power tools with your

Important Safety Warnings

finger on the switch or energizing power tools that have the switch on invites accidents.

- d. **Do not overreach. Keep proper footing and balance at all times.** This enables better control of the power tool in unexpected situations.
- e. **Dress properly. Do not wear loose clothing or jewelry. Keep your hair, clothing and gloves away from moving parts.** Loose clothes, jewelry or long hair can be caught in moving parts.
- f. **Do not let familiarity gained from frequent use of tools allow you to become complacent and ignore tool safety principles.** A careless action can cause severe injury within a fraction of a second.
- g. **Keep fingers away from moving parts, especially the area near the blades.**
- f. **Keep cutting tools sharp and clean.** Properly maintained cutting tools with sharp cutting edges are less likely to bind and are easier to control.
- g. **Use the power tool, accessories and tool bits etc. in accordance with these instructions, taking into account the working conditions and the work to be performed.** Use of the power tool for operations different from those intended could result in a hazardous situation.
- h. **Keep handles and grasping surfaces dry, clean and free from oil and grease.** Slippery handles and grasping surfaces do not allow for safe handling and control of the tool in unexpected situations.

4. Power Tool Use and Care

- a. **Do not force the power tool. Use the correct power tool for your application.** The correct power tool will do the job better and safer at the rate for which it was designed.
- b. **Do not use the power tool if the switch does not turn it on and off.** Any power tool that cannot be controlled with the switch is dangerous and must be repaired.
- c. **Ensure the speed wheel is in the "0" position before making any adjustments, changing accessories, or storing power tools.** Such preventive safety measures reduce the risk of starting the power tool accidentally.
- d. **Store idle power tools out of the reach of children and do not allow persons unfamiliar with the power tool or these instructions to operate the power tool.** Power tools are dangerous in the hands of untrained users.
- e. **Maintain power tools and accessories. Check for misalignment or binding of moving parts, breakage of parts and any other condition that may affect the power tool's operation. If damaged, have the power tool repaired before use.** Many accidents are caused by poorly maintained power tools.

5. Battery/Tool Use and Care

- a. **Recharge only with the charger specified by the manufacturer.** A charger that is suitable for one type of battery pack may create a risk of fire when used with another battery pack.
- b. **When tool is not in use, keep it away from other metal objects like paper clips, coins, keys, nails, screws, or other small metal objects that can make a connection from one terminal to another.** Shorting the battery terminals together may cause burns or a fire.
- c. **Under abusive conditions, liquid may be ejected from the battery, avoid contact. If contact accidentally occurs, flush with water. If liquid contacts eyes, additionally seek medical help.** Liquid ejected from the battery may cause irritation or burns.
- d. **Do not use a battery pack or tool that is damaged or modified.** Damaged or modified batteries may exhibit unpredictable behaviour resulting in fire, explosion or risk of injury.
- e. **Do not expose a battery pack or tool to fire or excessive temperature.** Exposure to fire or temperature above 265 °F may cause explosion.
- f. **Follow all charging instructions and do not charge the battery pack or tool outside the temperature range specified in the instructions.** Charging improperly or at temperatures outside the specified range may damage the battery and increase the risk of fire.

Important Safety Warnings

6. Service

- a. **Have your power tool serviced by a qualified repair person using only identical replacement parts.** This will ensure that the safety of the power tool is maintained.
- b. **Never service damaged battery packs.** Service of battery packs should only be performed by the manufacturer or authorized service providers.

Safety Rules for Cordless Scissors (Shears)

- a. **Keep hands away from moving cutting blades.** Contact with blade may cause personal injury.
- b. **Keep hands away from cutting area; never reach underneath the material for any reason while cutting.** Contact with blade may cause personal injury.
- c. **Ensure that no material or surface under the cutting area can be damaged by the cutting blades.**
- d. **Hold tool by insulated gripping surface when performing an operation where the cutting blades may contact hidden wiring.** Contact with a "live" wire will make exposed metal parts of the tool "live" and shock the operator.
- e. **In case of electrical or mechanical malfunction, immediately switch off the tool or unplug charger from power source.**
- f. **Battery tools are always in an operative condition.** Be aware of the possible hazards.
- g. **Do not run the tool while carrying it at your side.** Blades could become entangled with clothing and injury may result.
- h. **Do not cut material greater than the rated capacity of the scissors.** Cutting material greater than the capacity of the scissors may cause damage to the blades.
- i. **During a cut, don't remove scissors from work while blades are moving.** Removing the scissors while running may cause damage to the blades.
- j. **Do not use dull or damaged blades or accessories not intended for these scissors. Replace worn blades.** Sharp blades minimize stalling.

Additional Safety Warnings

⚠️ WARNING Some dust created by power sanding, sawing, grinding, drilling, and other construction activities contains chemicals known to cause cancer, birth defects or other reproductive harm. Some examples of these chemicals are:

- Lead from lead-based paints,
- Crystalline silica from bricks and cement and other masonry products, and
- Arsenic and chromium from chemically-treated lumber.

Your risk from these exposures varies, depending on how often you do this type of work. To reduce your exposure to these chemicals: work in a well ventilated area, and work with approved safety equipment, such as those dust masks that are specially designed to filter out microscopic particles.

SAVE THESE INSTRUCTIONS

Charging Safety Rules

- a. **This manual contains instructions for battery charger model 510.** Do not substitute any other charger.
- b. **Before using battery charger, read all instructions and cautionary markings on (1) battery charger, and (2) product using battery.**
- c. **Charge only Dremel HSSC-01.** Other types of cordless tools may burst causing personal injury and damage.
- d. **Charge tool in temperatures above +41 degrees F (5 degrees C) and below +113 degrees F (45 degrees C). Store tool in locations where temperatures will not exceed 120 degrees F (49 degrees C).** This is important to prevent serious damage to the battery cells.
- e. **To reduce the risk of fire, personal injury, and product damage due to a short circuit, never immerse your tool in fluid or allow a fluid to flow inside them.** Corrosive or conductive fluids, such as seawater, certain industrial chemicals, and bleach or bleach containing products, etc., can cause a short circuit.
- f. **Do not recharge tool in damp or wet environment. Do not expose charger to rain or snow.** Water entering battery charger may result in electric shock or fire.
- g. **Battery leakage may occur under extreme usage or temperature conditions. Avoid contact with skin and eyes.** The battery liquid is caustic and could cause chemical burns to tissues. If liquid comes in contact with skin, wash quickly with soap and water. If the liquid contacts your eyes, flush them with water for a minimum of 10 minutes and seek medical attention.
- h. **Place charger on flat nonflammable surfaces and away from flammable materials when recharging tool.** Carpeting and other heat insulating surfaces block proper air circulation, which may cause overheating of the charger and tool. If smoke or melting of the charger or tool is observed, unplug the charger immediately and do not use the tool or charger. Contact customer service immediately.
- i. **Make sure cord is located so that it will not be stepped on, tripped over, or otherwise subjected to damage or stress.** Damaged plug and cord may result in electric shock or fire.
- j. **Disconnect the charger by pulling the plug rather than the cord. Do not operate charger with damaged cord or plug; have them replaced immediately.** Damaged plug or cord may result in electric shock or fire.
- k. **Do not disassemble charger or operate the charger if it has received a sharp blow, been dropped or otherwise damaged in anyway.** Incorrect reassembly or damage may result in electric shock or fire.
- l. **Before each use, check the battery charger, cable and plug. If damage is detected, do not use the battery charger. Never open the battery charger yourself, take it to a Dremel Factory Service Center, or qualified serviceman only using original spare parts.** Incorrect reassembly may result in electric shock or fire.
- m. **Do not use attachments not recommended or sold by Dremel.** Using attachments not recommended may result in electric shock or fire.
- n. **Unplug tool from charger when battery in tool is fully charged.** Tool left plugged in the charger over a long period of time could lead to tool damage and fire.
- o. **Unplug charger from outlet before storage, attempting any maintenance or cleaning.** Such preventive safety measures reduce the risk of electric shock or fire.
- p. **Keep the battery charger clean by blowing compressed air on charger vents and wiping the charger housing with a damp cloth.** Contamination may result in electric shock or fire.

Charging Safety Rules

Battery Care

- a. **Battery leakage may occur under extreme usage or temperature conditions. Avoid contact with skin and eyes.** The battery liquid is caustic and could cause chemical burn to tissues. If liquid comes in contact with skin, wash quickly with soap and water. If the liquid contacts your eyes, flush them with water for a minimum of 10 minutes and seek medical attention.

Tool/Battery Disposal

 **WARNING** Do not attempt to disassemble the tool or remove any component projecting from the tool. Fire or injury may result.

Bosch is committed to environmental protection. We encourage you to responsibly recycle your Bosch product when it reaches end of life, because recycling saves resources and creates jobs. Please find a local e-recycling facility near you to properly dispose of this product.

FCC Caution

The manufacturer is not responsible for radio interference caused by unauthorized modifications to this equipment. Such modifications could void the user's authority to operate the equipment.

This device complies with Part 15 of the FCC Rules. Operation is subject to the following two conditions:

- 1) This device may not cause harmful interference, and
- 2) This device must accept any interference received, including interference that may cause undesired operation.

NOTE! This equipment has been tested and found to comply with the limits for a Class B digital devices, pursuant to Part 15 of the FCC rules. These limits are designed to provide reasonable protection against harmful interference in a residential installation. This equipment generates, uses and can radiate radio frequency energy and,

if not installed and used in accordance with the instructions, may cause harmful interference to radio communications. However, there is no guarantee that interference will not occur in a particular installation. If this equipment does cause harmful interference to radio or television reception, which can be determined by turning the equipment off and on, the user is encouraged to try to correct the interference by one or more of the following measures:

- Reorient or relocate the receiving antenna.
- Increase the separation between the equipment and receiver.
- Connect the equipment into an outlet on a circuit different from that to which the receiver is connected.
- Consult the dealer or an experienced radio/TV technician for help.







IC Canada

This class B digital device complies with ICES-003

Canada ICES-003(B) / NMB-003 (B)

Symbols

Important: Some of the following symbols may be used on your tool. Please study them and learn their meaning. Proper interpretation of these symbols will allow you to operate the tool better and safer.

Symbol	Designation / Explanation
V	Volts (voltage)
A	Amperes (current)
Hz	Hertz (frequency, cycles per second)
n_0	No load speed (rotational speed at no load)
.../min	Revolutions or reciprocation per minute (revolutions, strokes, surface speed, orbits etc. per minute)
0	Off position (zero speed, zero torque...)
1, 2, 3, ... I, II, III,	Selector settings (speed, torque or position settings. Higher number means greater speed)
➔	Arrow (action in the direction of arrow)
~	Alternating current (type or a characteristic of current)
— — —	Direct current (type or a characteristic of current)
	Class II construction (designates double insulated construction tools)
	Alerts user to read manual
	Alerts user to wear eye protection
	This symbol designates that this tool is listed by Underwriters Laboratories, to United States and Canadian Standards.
	This symbol designates that this tool is listed by the Canadian Standards Association, to United States and Canadian Standards.
	This symbol designates that this product is verified by Underwriters Laboratories to comply with Natural Resources Canada energy efficiency standards.

Functional Description and Specifications

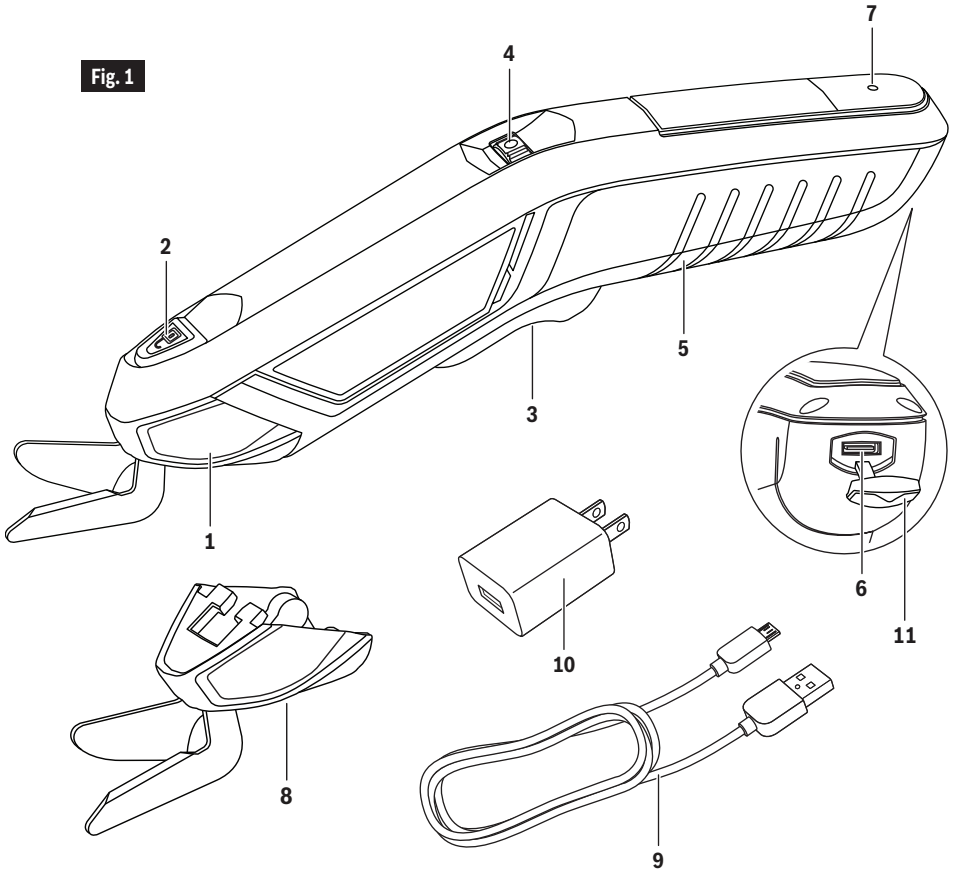


Battery tools are always in an operative condition. Be aware of the possible hazards.

SAVE THESE INSTRUCTIONS

Dremel HSSC-01 Lithium-ion Cordless Scissors (Shears)

Fig. 1



- | | |
|--|--|
| 1 Blade attachment | 7 Battery charge indicator |
| 2 Blade attachment release button | 8 Replacement blade attachment |
| 3 On/Off trigger | 9 USB-C cable |
| 4 Variable speed dial | 10 Power adapter (or “charger”) |
| 5 Insulated gripping surface | 11 USB-C port cover |
| 6 USB-C port | |

Functional Description and Specifications

Cordless Scissors (Shears)	
Model number	HSSC-01
Allowed ambient temperature	
– during charging	41...113 °F (5...+45 °C)
– during operation/storage	-4...122 °F (-20...+50 °C)
AC Power Adapter	
Model number	510
Input	120V~60Hz
Output	5V $\overline{\text{---}}$ 1.0A
Battery	
Chemistry	Li-ion
Capacity	2.0 Ah
Charge time	Approx. 2.5 Hr.
USB Cable	
Rating	5V $\overline{\text{---}}$ 2.0A

Charging the Tool

⚠️ WARNING Use only Dremel 510 power adapter and the provided USB cable to charge the tool. Use of other power adapter or USB cable may increase the risk of fire, personal injury and property damage.

Your Dremel HSSC-01 does not come completely charged from the factory. Be sure to charge tool prior to initial use.

- Insert USB-C cable **9** into USB port of power adapter **10** (Fig. 1).
- Plug power adapter **10** into standard power outlet.
- Plug USB-C plug into USB-C port **6**.

The battery charge indicator **7** will blink indicating that the battery is charging. See “Battery Charge Indicator” below for more information.

It is normal for the handle of the tool to get warm during charging.

Note: The tool cannot be used during the charging process.

When the battery is fully charged, disconnect the USB-C end of the cable **9** from the tool.

Unplug the power adapter from the power outlet (unless you are charging another tool).

BATTERY CHARGE INDICATOR

At each turn on, the battery status indicator **7** will report the current charge state of the battery for 3 seconds. See table.

Turn-On Battery Status	
LED	Charge Status
Green	>50%
Orange	<50%, >10%
Red	<10%

In use, the battery status indicator will flash red to indicate a low battery (<10%) condition.

Charging the Tool

While charging, the battery status indicator will blink green, transitioning to steady green when charging is complete.

Charging Behavior	
LED	Charge Status
Flashing Green	Charging
Solid Green	Charge Complete

IMPORTANT CHARGING NOTES

- Lithium-ion battery will hold its charge while in storage for up to 2 years so it's always ready when you need it.
- The charger was designed to charge the battery only when the battery temperature is between 41°F (5°C) and 113°F (45°C).
- A substantial drop in operating time per charge may mean the internal battery pack is nearing the end of its life and

the tool should be replaced. Contact Dremel customer service at 1-800-4-DREMEL if there are questions.

- If battery does not charge properly:
 - a. Check for voltage at outlet by plugging in some other electrical device.
 - b. Check to see if outlet is connected to a light switch which turns power "off" when lights are turned off.
 - c. Check to see if USB cable is properly connected to the tool and the power adapter.
 - d. If you still do not get proper charging, send tool and power adapter to your Dremel Service Center.

Note: Use of power adapters or battery packs not sold by Dremel may void the warranty.

Operating Instructions

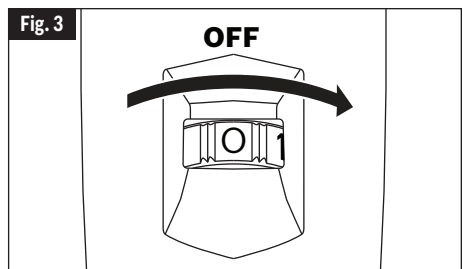
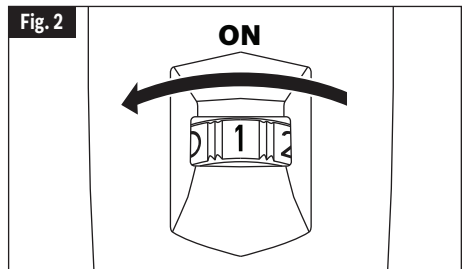
⚠ WARNING Ensure tool is turn off before making any assembly, adjustments or changing accessories. Such preventive safety measures reduce the risk of starting the tool accidentally.

Turning On/Off Scissors

To turn on tool: slide variable speed dial **4** in left direction to desired speed (you will hear audible click) (Fig. 2), pull trigger **3** to turn on tool.

To turn off tool: release trigger **3**, slide variable speed dial **4** in right direction to "0" position (you will hear an audible click) (Fig. 3).

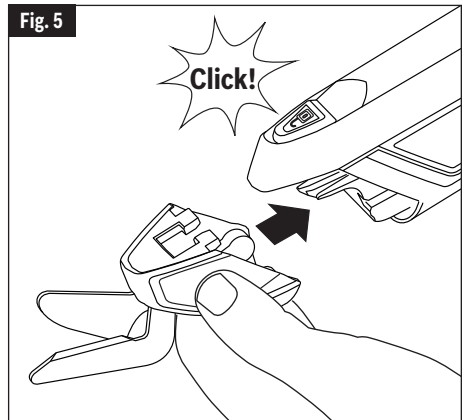
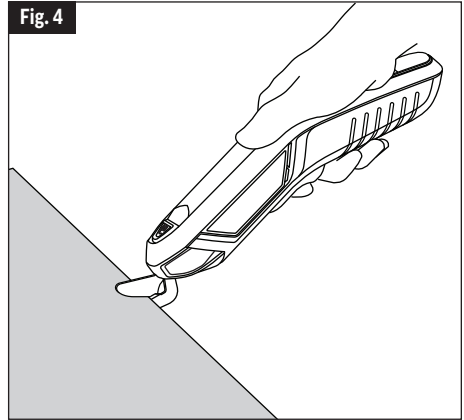
⚠ WARNING Rotate variable speed dial to "0" position whenever tool is not being used. This will reduce the risk of fire, personal injury and property damage.



Operating Instructions

Making a cut

1. Ensure full charge of scissors (static green LED).
2. Hold tool in vertical position with blades perpendicular to the cutting material.
3. Turn variable speed dial **4** left to turn ON scissors.
4. Turn variable speed dial **4** left to increase speed. Speed is variable from 1 to 5 for lower to higher speeds.
5. Pull on/off trigger **3** to initiate cutting.
6. Engage cutting blades to material, Fig. 4.
7. When complete, release trigger **3** and turn variable speed dial **4** right to "0" to turn scissors OFF.

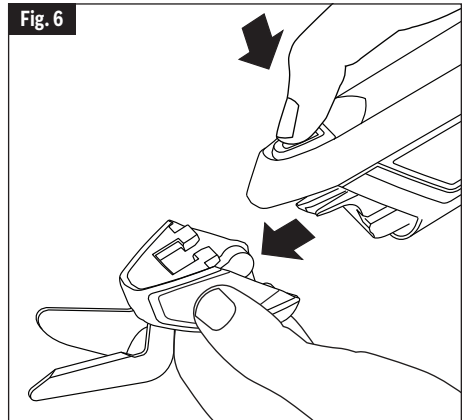


Blade Attachment

Your Electronic Scissors are provided with replacement blades.

To attach blade attachment: Turn off tool. Hold blade attachment **8** by grip and slide into position, Fig. 5. You should hear an audible click, blade attachment is secure.

To remove blade attachment: Turn off tool. Press blade attachment release button **2** and pull blade attachment **8** from lock position, Fig. 6.



Material Usage

Recommended materials for use:

- Cardboard
- Maximum thickness: 1/4"
- Plastic Packaging
- Fabric
- Foam Boards
- Paper goods

Materials not recommended:

- Metal wires
- Sheet metal
- Sand paper (abrasive materials)

Maintenance

⚠ WARNING To avoid accidents, always disconnect the tool and/or charger from the power supply and turn variable speed dial to "0" position before cleaning.

Service

⚠ WARNING **NO USER SERVICEABLE PARTS INSIDE.** Preventive maintenance performed by unauthorized personnel may result in misplacing of internal wires and components which could cause serious hazard. We recommend that all tool service be performed by a Dremel Service Center. **SERVICEMEN:** Disconnect tool and/or charger from power source before servicing.

significantly shorter running time between charges than it is time to replace the battery pack. Failure to do so can cause the tool to operate improperly or damage the charger.

Cleaning

⚠ CAUTION Certain cleaning agents and solvents damage plastic parts. Some of these are: gasoline, carbon tetrachloride, chlorinated cleaning solvents, ammonia and household detergents that contain ammonia.

Ventilation openings and switch levers must be kept clean and free of foreign matter. Do not attempt to clean by inserting pointed objects through opening.

Batteries

Be alert for battery packs that are nearing their end of life. If you notice decreased tool performance or

Extension Cords

⚠ WARNING If an extension cord is necessary, a cord with adequate size conductors that is capable of carrying the current necessary for your tool must be used. This will prevent excessive voltage drop, loss of power or overheating. Grounded tools must use 3-wire extension cords that have 3-prong plugs and receptacles.

NOTE: The smaller the gauge number, the heavier the cord.

RECOMMENDED SIZES OF EXTENSION CORDS 120 VOLT ALTERNATING CURRENT TOOLS

Tool's Ampere Rating	Cord Size in A.W.G.				Wire Sizes in mm ²			
	Cord Length in Feet				Cord Length in Meters			
	25	50	100	150	15	30	60	120
3-6	18	16	16	14	0.75	0.75	1.5	2.5
6-8	18	16	14	12	0.75	1.0	2.5	4.0
8-10	18	16	14	12	0.75	1.0	2.5	4.0
10-12	16	16	14	12	1.0	2.5	4.0	-
12-16	14	12	-	-	-	-	-	-

Dremel™ Limited Warranty

Your Dremel product is warranted against defective material or workmanship for a period of two years from date of purchase. In the event of a failure of a product to conform to this written warranty, please take the following action:

1. DO NOT return your product to the place of purchase.
2. Carefully package the product by itself, with no other items, and return it, freight prepaid, along with:
 - A. A copy of your dated proof of purchase (please keep a copy for yourself).
 - B. A written statement about the nature of the problem.
 - C. Your name, address and phone number to:

UNITED STATES

**Dremel Service Center
4915 21st Street
Racine, WI 53406**

OR

CANADA

Giles Tool Agency
47 Granger Av.
Scarborough, Ontario Canada
M1K 3K9 1-416-287-3000

OUTSIDE CONTINENTAL UNITED STATES

See your local distributor or write to Dremel, 4915 21st Street Racine, WI 53406

We recommend that the package be insured against loss or in transit damage for which we cannot be responsible.

This warranty applies only to the original registered purchaser. DAMAGE TO THE PRODUCT RESULTING FROM TAMPERING, ACCIDENT, ABUSE, NEGLIGENCE, UNAUTHORIZED REPAIRS OR ALTERATIONS, UNAPPROVED ATTACHMENTS OR OTHER CAUSES UNRELATED TO PROBLEMS WITH MATERIAL OR WORKMANSHIP ARE NOT COVERED BY THIS WARRANTY.

No employee, agent, dealer or other person is authorized to give any warranties on behalf of Dremel. If Dremel inspection shows that the problem was caused by problems with material or workmanship within the limitations of the warranty, Dremel will repair or replace the product free of charge and return product prepaid. Repairs made necessary by normal wear or abuse, or repair for product outside the warranty period, if they can be made, will be charged at regular factory prices.

DREMEL MAKES NO OTHER WARRANTY OF ANY KIND WHATEVER, EXPRESSED OR IMPLIED, AND ALL IMPLIED WARRANTIES OF MERCHANTABILITY AND FITNESS FOR A PARTICULAR PURPOSE WHICH EXCEED THE ABOVE MENTIONED OBLIGATION ARE HEREBY DISCLAIMED BY DREMEL AND EXCLUDED FROM THIS LIMITED WARRANTY.

This warranty gives you specific legal rights and you may also have other rights which vary from state to state. The obligation of the warrantor is solely to repair or replace the product. The warrantor is not liable for any incidental or consequential damages due to any such alleged defect. Some states do not allow the exclusion or limitation of incidental or consequential damages, so the above limitations or exclusion may not apply to you.

For prices and warranty fulfillment in the continental United States, contact your local Dremel distributor.

Exportado por: © Robert Bosch Tool Corporation Mt. Prospect, IL 60056 -2230, E.U.A.

Importado a México por: Robert Bosch, S. de R.L. de C.V.
Calle Robert Bosch No. 405 - 50071 Toluca, Edo. de Méx. - México
Tel. 052 (722) 279 2300 ext 1160 / Fax. 052 (722) 216-6656